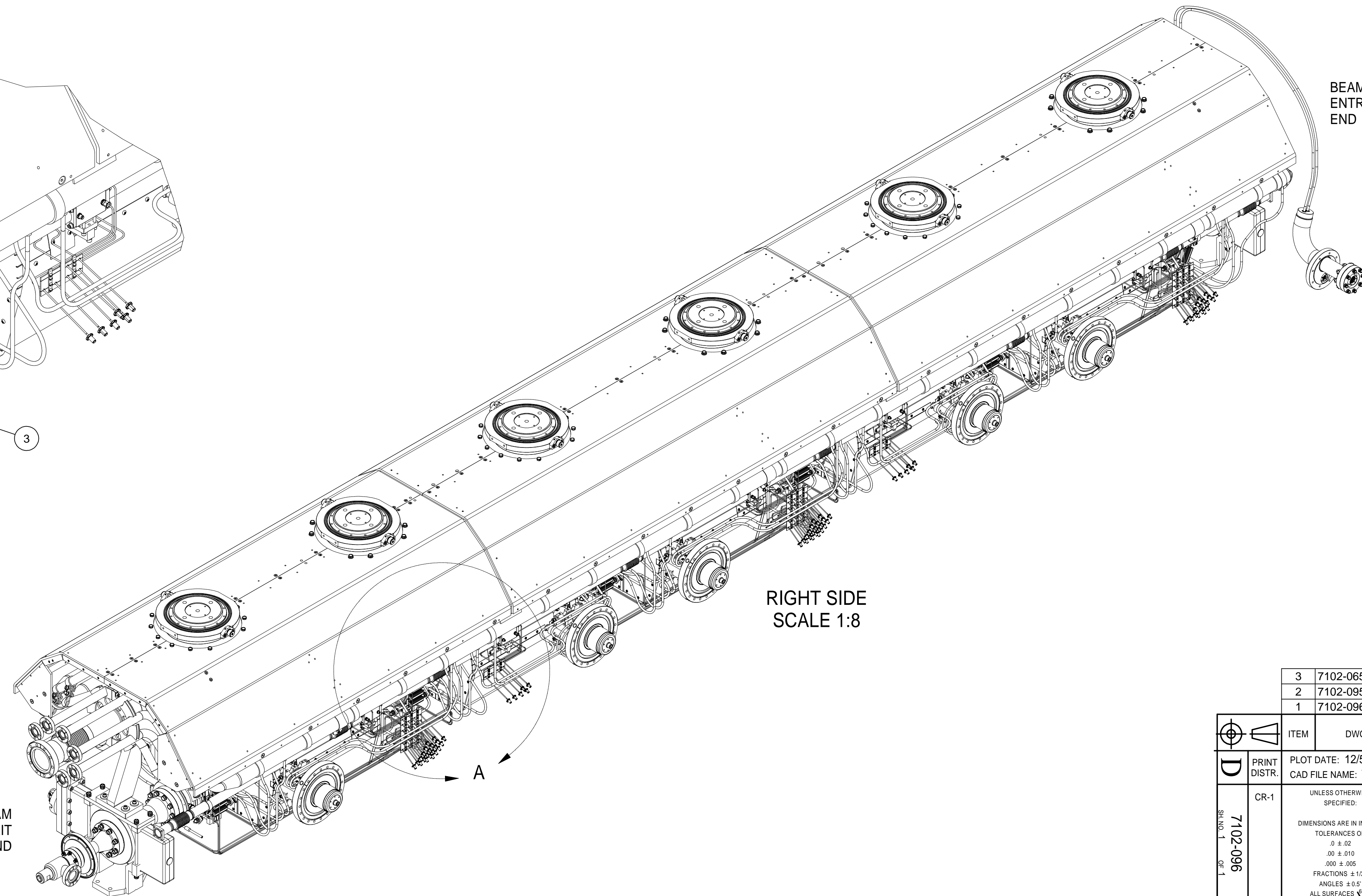
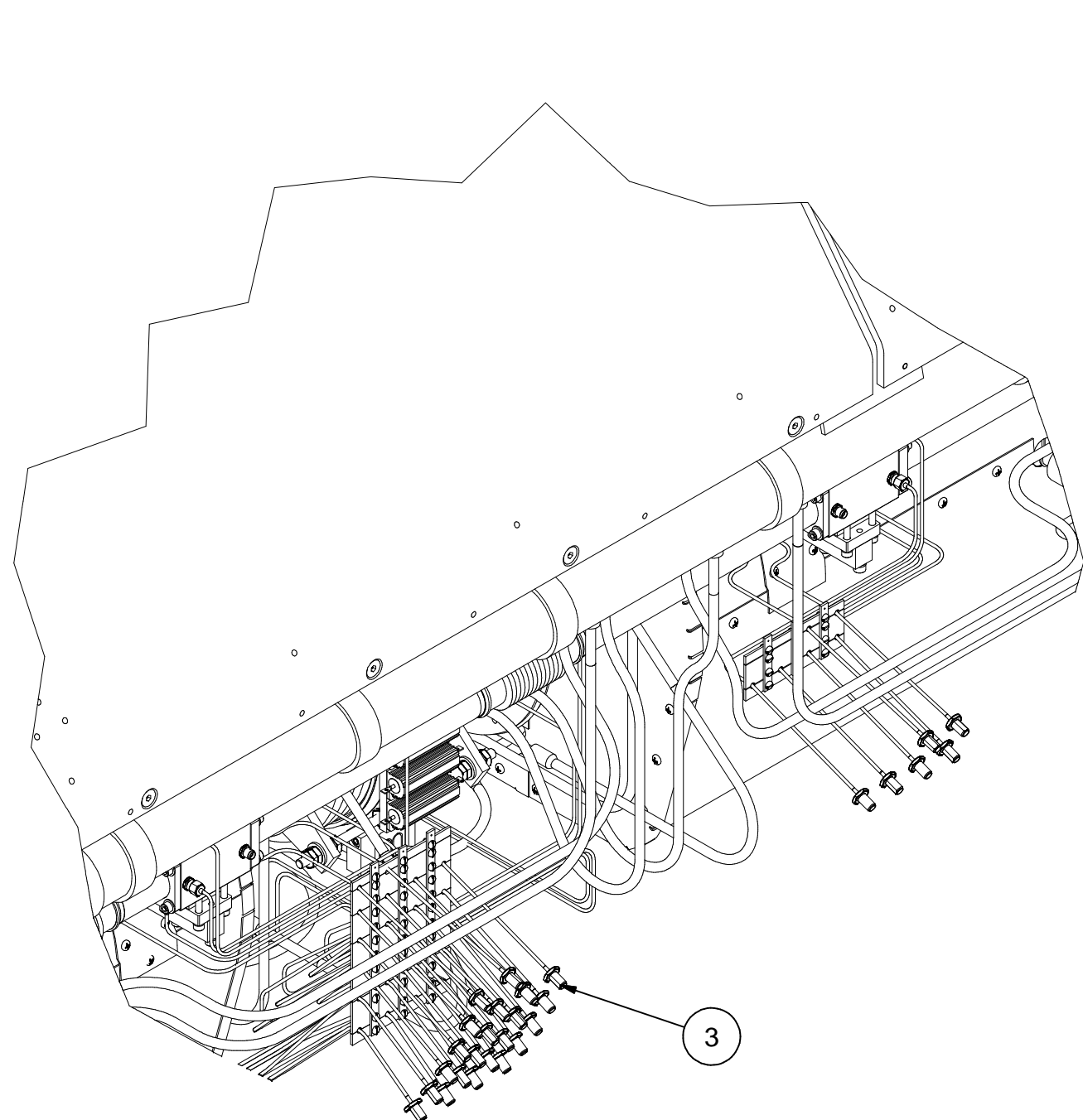
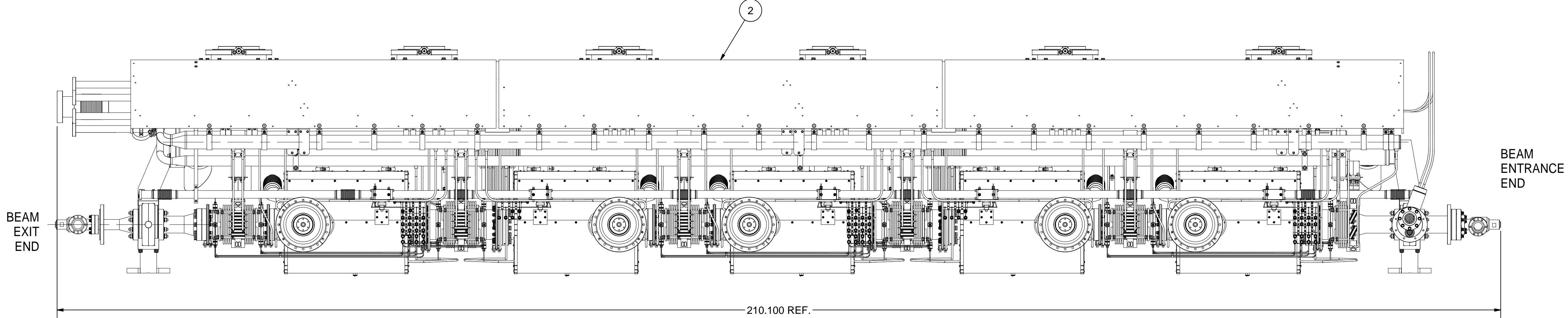
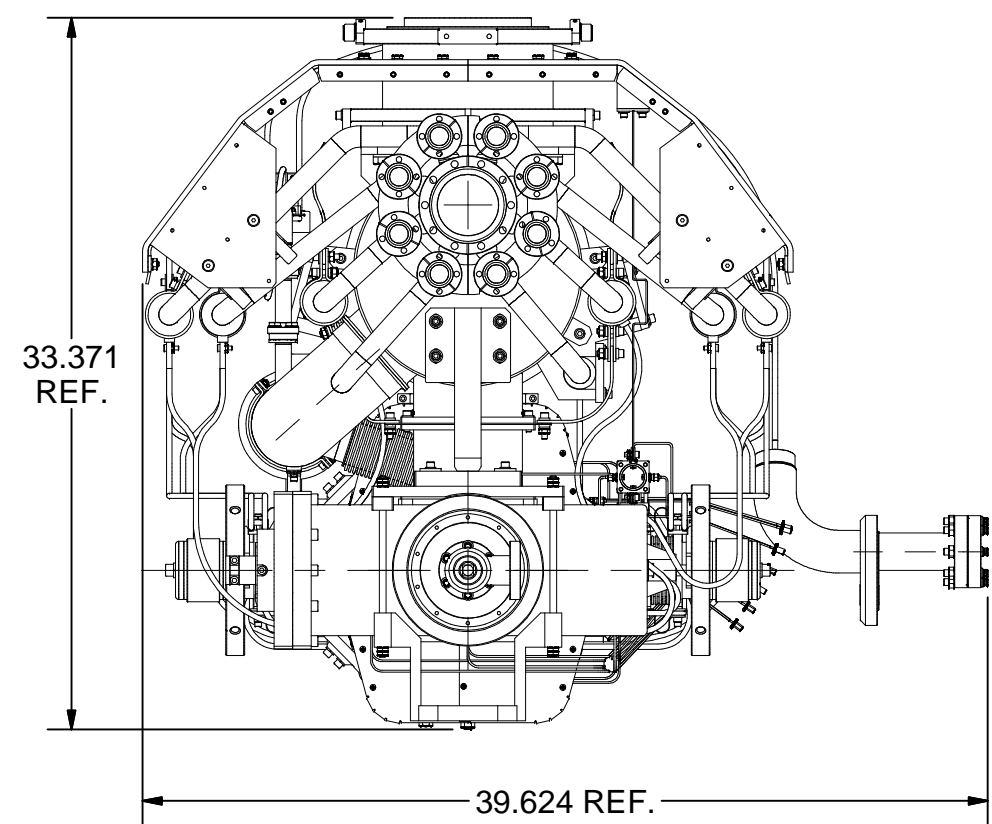
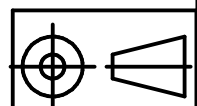




REVISIONS				
SYM.	ZONE	DESCRIPTION	DATE	APP.



1 ASSEMBLY, STEP 7
FILE NAME: 7102-096
SHEET NO.: 1
DFT. SCALE: 1:9
MATERIAL:
QTY: 1 PER CRYOMODULE
NOTES:

3	7102-065	SEMI-RIGID CABLES LAYOUT	1					
2	7102-095	ASSEMBLY, STEP 6	1					
1	7102-096 (Sh.1)	ASSEMBLY, STEP 7	X					
ITEM	DWG. NO.	DESCRIPTION	G1	G2	G3	REMARKS	REV.	
			QUANTITY					



D	PRINT DISTR.	PLOT DATE: 12/5/2007 CAD FILE NAME: 7102-096.idw									
		CR-1	<div>UNLESS OTHERWISE SPECIFIED: DIMENSIONS ARE IN INCHES: TOLERANCES ON: .0 ± .02 .00 ± .010 .000 ± .005 FRACTIONS ± 1/32 ANGLES ± 0.5° ALL SURFACES </div>	<div> CORNELL UNIVERSITY LABORATORY FOR ELEMENTARY-PARTICLE PHYSICS</div>		CORNELL UNIVERSITY Floyd R. Newman Laboratory Ithaca, NY 14853					
SH. NO. 1 OF 1	7102-096		ERL INJECTOR CRYOMODULE ASSEMBLY, STEP 7 ASSEMBLY, STEP 7: ORTHO AND ISO VIEWS								
REV.		CHECKED BY: VM	DRAWN BY	DRAWN FOR	DATE	SCALE	D	7102-096	REV.		
		APPROVED BY: VM	vm	M.Liepe	10/31/07	SH. NO. 1 OF 1					